

Cal State Freshman Admission

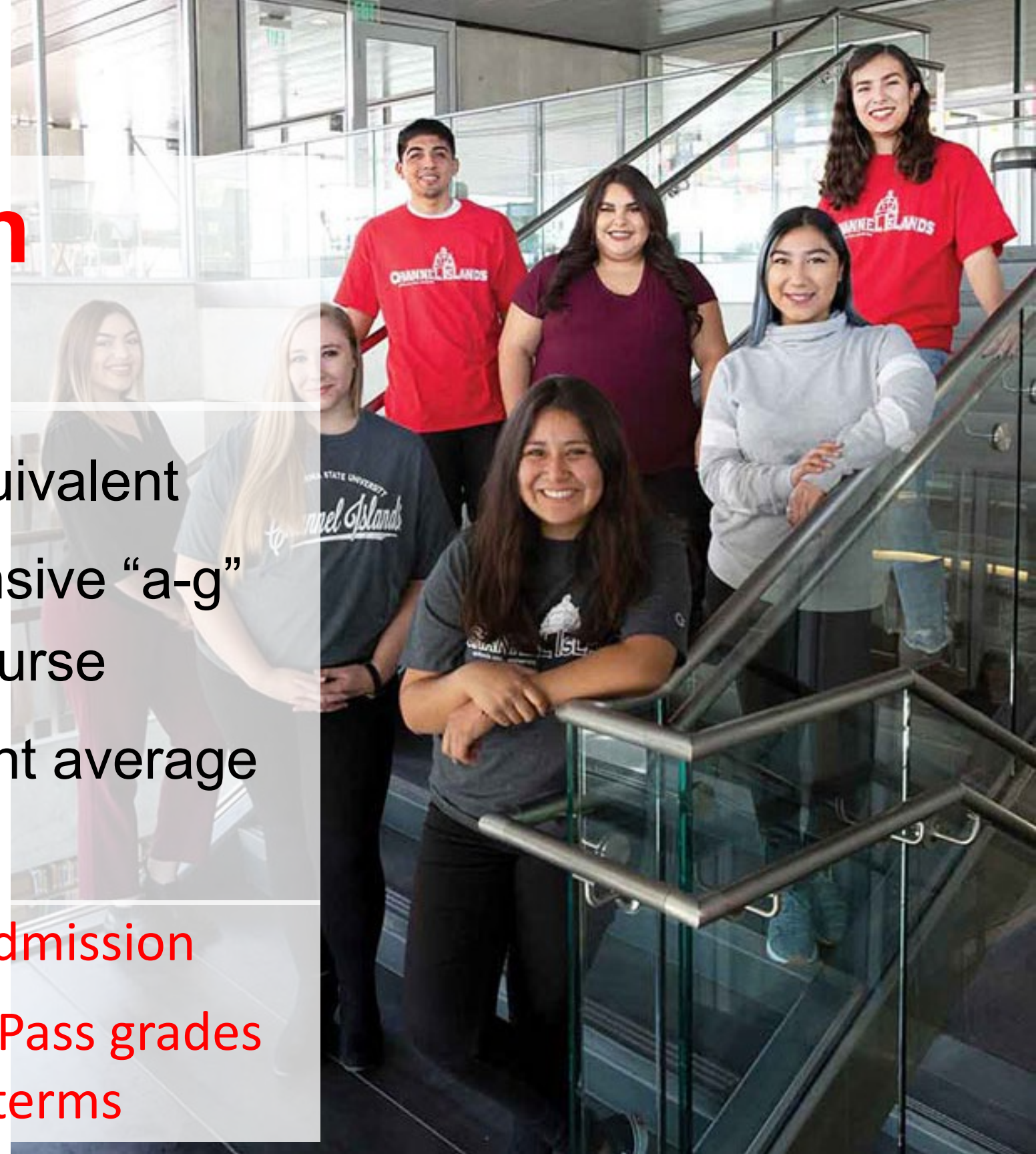
September 2020



Information in this presentation pertains to all CSU campuses.
Campus names on each slide pertain to the background picture.

Fall 2021 Freshman Eligibility

- Be a high school graduate or equivalent
- Complete the 15-unit comprehensive “a-g” pattern of college preparatory course
- Earn a qualifying “a-g” grade point average (GPA)
- Will not use SAT or ACT Exams for admission
- CSU campuses will accept Credit or Pass grades for **winter, spring or summer 2020** terms



- **CSU Minimum Eligibility**

- California residents and graduates of California high schools with a 2.50 or greater “a-g” GPA
- Non-California residents earning a 3.00 or greater “a-g” GPA

- **Campus Decision to Evaluate for Admission Using Supplemental Factors**

- California high school graduates or residents of California earning a GPA between 2.00 and 2.49
- Non-California high school graduate or non-residents of California earning a GPA between 2.47 and 2.99

- **Not CSU Eligible**

- California high school graduates or residents of California earning a GPA 1.99 or below
- Non-California high school graduates or non-residents of California earning a GPA 2.46 or below

**Fall 2021 Qualifying “a-g”
GPAs**



- Each CSU campuses will determine the supplemental factors used
- Impacted campuses and programs may also use supplemental factors
- Supplemental factors could include:
 - Courses exceeding minimum “a-g” courses
 - Household income
 - Extracurricular involvement
 - Work experience
 - Math/QR GPA
 - Educational program participation
 - Others

2021-22 Supplemental Factors



Used by Many Campuses

“a-g” GPA

“a-g” Courses above 30/15

Promise/Partnership programs

First Generation

Low Income (App Fee Waiver)

Educational Programs

Foster Youth Services

Military Status

Less Frequently Used

Math/QR GPA (STEM Impacted)

Work Experience

Extracurricular Activities

Leadership Positions

School Free & Reduced Lunch
(based on CA Promise Indicator)

English GPA

Lab Courses GPA (STEM)

Example Factors

Supplemental Factors

How Supplemental Factors will be Used

- Fully Impacted Campuses
 - All Programs and populations
- Impacted at First-time Freshman Level & Some Programs
 - All impacted programs and populations
- Program Impaction Only or No Impaction
 - Programs that are impacted
 - Campus Decision Populations
- Impacted programs may keep their process as long as no SAT/ACT test scores are part of evaluation

- ALL students are strongly encouraged to enroll in their senior-year English course and a year-long mathematics/quantitative reasoning course
- These courses could include:
 - Expository Reading and Writing (ERWC)
 - Math Reasoning with Connections (MRWC)
- SAT/ACT will be used for placement purposes **ONLY**
- Early Start 2021 has not yet been decided
- Visit [CSUStudentSuccess.org](https://www.csustudentsuccess.org) for more details



Academic Preparation and Placement



**The California
State University**

| CSU WEEK

| 23 Campuses | 1 Week



Each campus will present a short live session to provide a campus overview, information about the admission process and a question and answer portion. If you are not able to attend, all sessions will be recorded.

| October 5 - 9, 2020

Register at WWW.CALSTATE.EDU/APPLY/CSUWEEK

Visit site to check out when each campus will present to transfer and high school students. Don't miss out on your chance to connect with us.

Students can register at:

<https://www2.calstate.edu/apply/csuweek/Pages/default.aspx>

COVID-19 Guidance -
<https://www2.calstate.edu/apply/freshman/Pages/first-time-freshman-guidance.aspx>

COVID-19 FAQs -
<https://www2.calstate.edu/apply/Pages/first-time-freshman-faq.aspx>

Campus Virtual Tours -
<https://www2.calstate.edu/apply/choosing-a-campus>

CSU Week – For Students & Families – Oct. 5th – 9th
<https://www2.calstate.edu/apply/csweek/Pages/default.aspx>

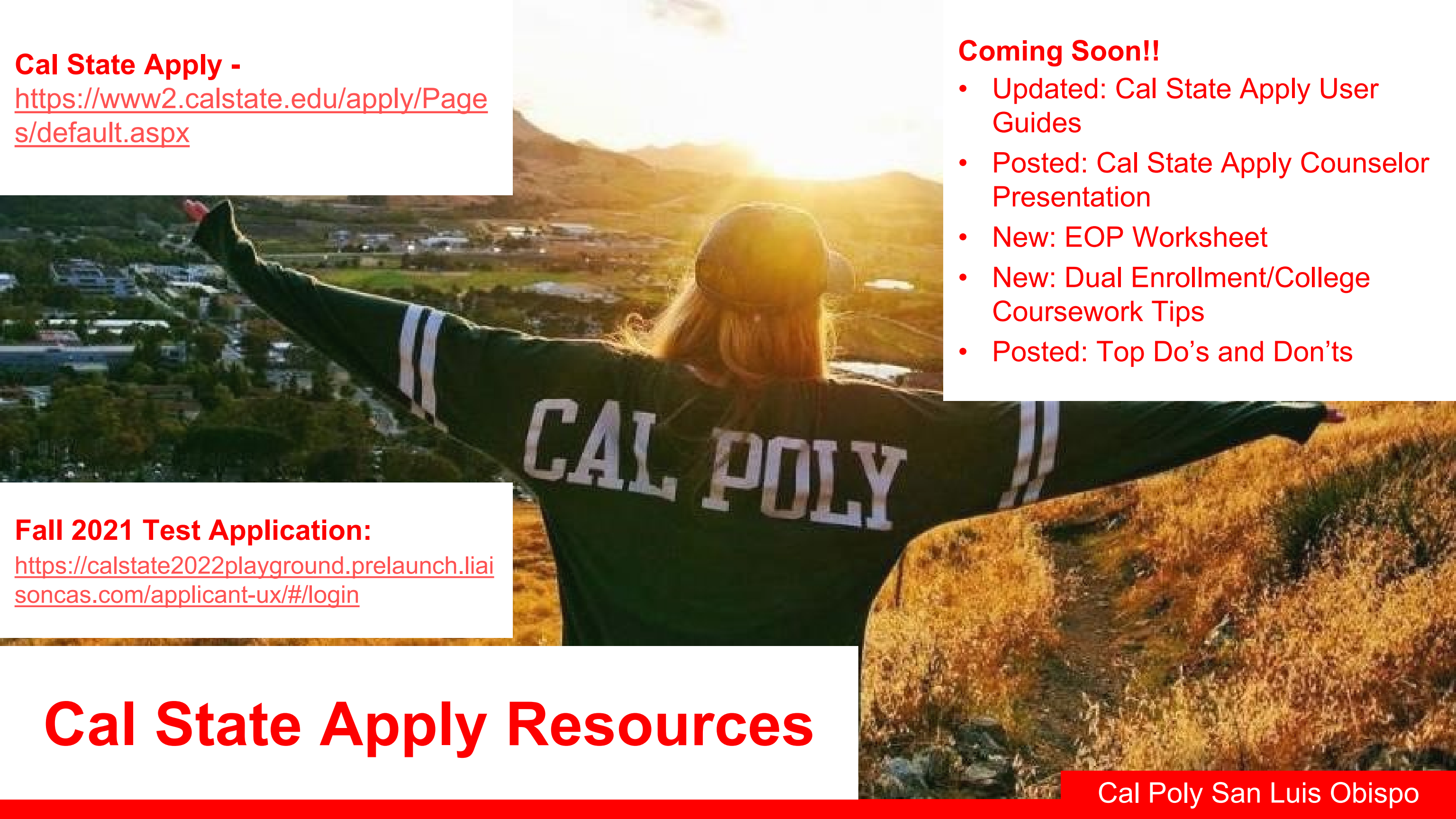
Receive CSU Updates!
Sign up at: Counselors.CalState.edu



Counselor Resources
(<https://www2.calstate.edu/attend/counselor-resources>)

- CSU Admission Handbook
- CSU-UC Comparison of Minimum Freshman Admission Requirements

Resources



Cal State Apply -
<https://www2.calstate.edu/apply/Pages/default.aspx>

- Coming Soon!!**
- Updated: Cal State Apply User Guides
 - Posted: Cal State Apply Counselor Presentation
 - New: EOP Worksheet
 - New: Dual Enrollment/College Coursework Tips
 - Posted: Top Do's and Don'ts

Fall 2021 Test Application:
<https://calstate2022playground.prelaunch.liaisoncas.com/applicant-ux/#/login>

Cal State Apply Resources



Thank you for all you are
doing for our students!

VISIT US AT!

<https://www2.calstate.edu/Apply>